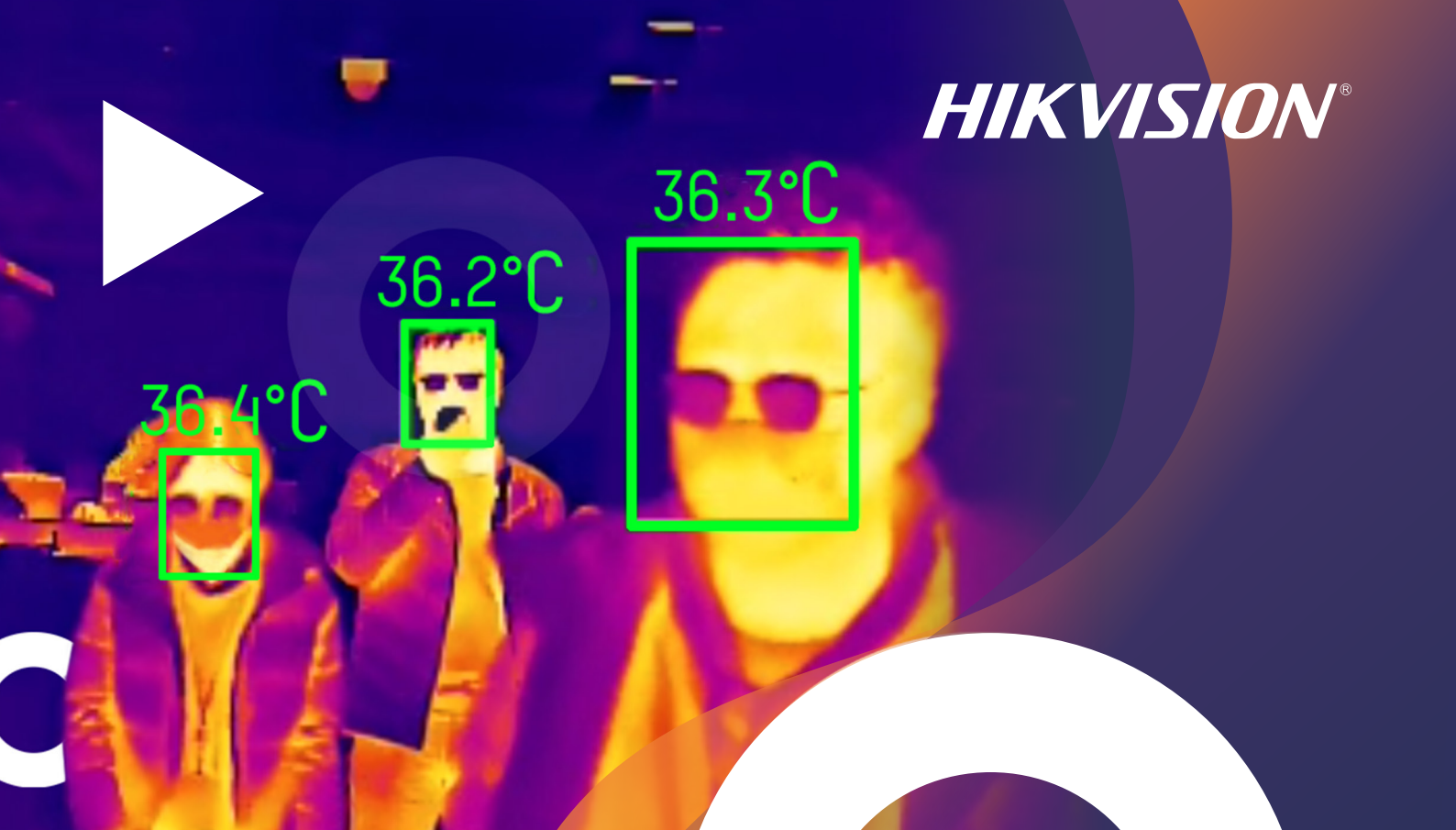


HIKVISION®



Flexible Product Choices

Temperature Screening Solution Range

Hikvision Temperature Screening Solution, with multiple product types and wide range of applications, is designed for the detection of skin-surface temperatures so as to achieve rapid and safe preliminary screening in public areas with high efficiency in a multitude of scenarios.

Thermographic
Cameras

MinMoe Terminals

Metal Detector Door

DeepinMind NVRs



We Offer a Better Approach

An approach that incorporates competent technologies, instead of manpower alone, can be a much better choice in many ways. Such an approach is:



Safer

Non-contact measurement to avoid physical contact



Faster

One second per person for skin-surface temperature detection



Smarter

AI detection, greatly reducing false alarms

Advantages of Thermal Technology

- AI technology ensures thermographic cameras only detect human skin-surface temperature to reduce false alarms of other heat sources.
- Compensation algorithm ensures the temperature is compensated with ambient temperature and the distance of the measured target for better accuracy.
- Thermal technology has been applied widely in temperature screening scenarios as it offers more flexibility and efficiency in preliminary screening of elevated skin-surface temperatures.



Workflow

Entering
detection
area

1

Human skin-surface temperature measurement
Fast preliminary temperature screening
without contact



Locating
potential abnormal
temperatures

3

Second check with
mercury or ear
thermometers

4

Solution Overview

OPERATION TIPS

- Install the devices in a windless indoor environment
- Set up a specific temperature measurement zone
- Double-check with a thermometer upon detection of elevated skin-surface temperatures

Temperature Screening with Fast Deployment

Thermographic Cameras

Visualised bi-spectrum live view



Thermographic Bullet/Turret Camera

Flexible product choice for temperature screening of building entrances, elevator halls, airport security checks, etc.

Wireless Devices

Easy connection, cable free



Thermographic Handheld Camera

Metal Detector Doors

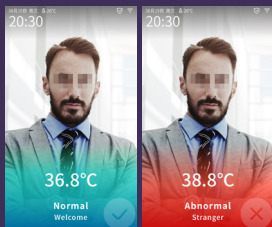
Real-time sound and light alarm



Metal Detector Door

Temperature Screening with Access Control

Touch-Free, Access is Easier but Safer



Door Control

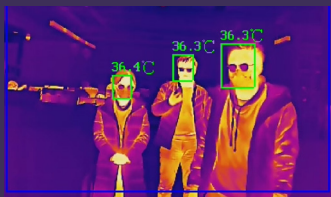
Wall-mounted to control the door



Touch-free access control with temperature measurement

Group Temperature Screening

Group Screening with High Efficiency



Thermographic Bullet Camera

Supports simultaneous temperature screening of multiple people, greatly enhancing efficiency

Temperature Screening on Patrol

Anytime, Anywhere, Just One Click



Thermographic Handheld Camera

Supports preliminary on-spot temperature screening without disturbing a person

Temperature Screening & Mask Detection

Intuitive Demonstration



Thermographic Camera & DeepinMind NVR

The special interface of DeepinMind NVR visually displaying temperature and mask status